



Andy Beshear
GOVERNOR

TRANSPORTATION CABINET

200 Mero Street
Frankfort, Kentucky 40601

Jim Gray
SECRETARY

December 6, 2022

CALL NO. 111
CONTRACT ID NO. 221064
ADDENDUM # 3

Subject: DAVIESS COUNTY, STP 5078 (017)
Letting December 8, 2022

(1) Revised - Plan Sheet - U114

Proposal revisions are available at <http://transportation.ky.gov/Construction-Procurement/>.

If you have any questions, please contact us at 502-564-3500.

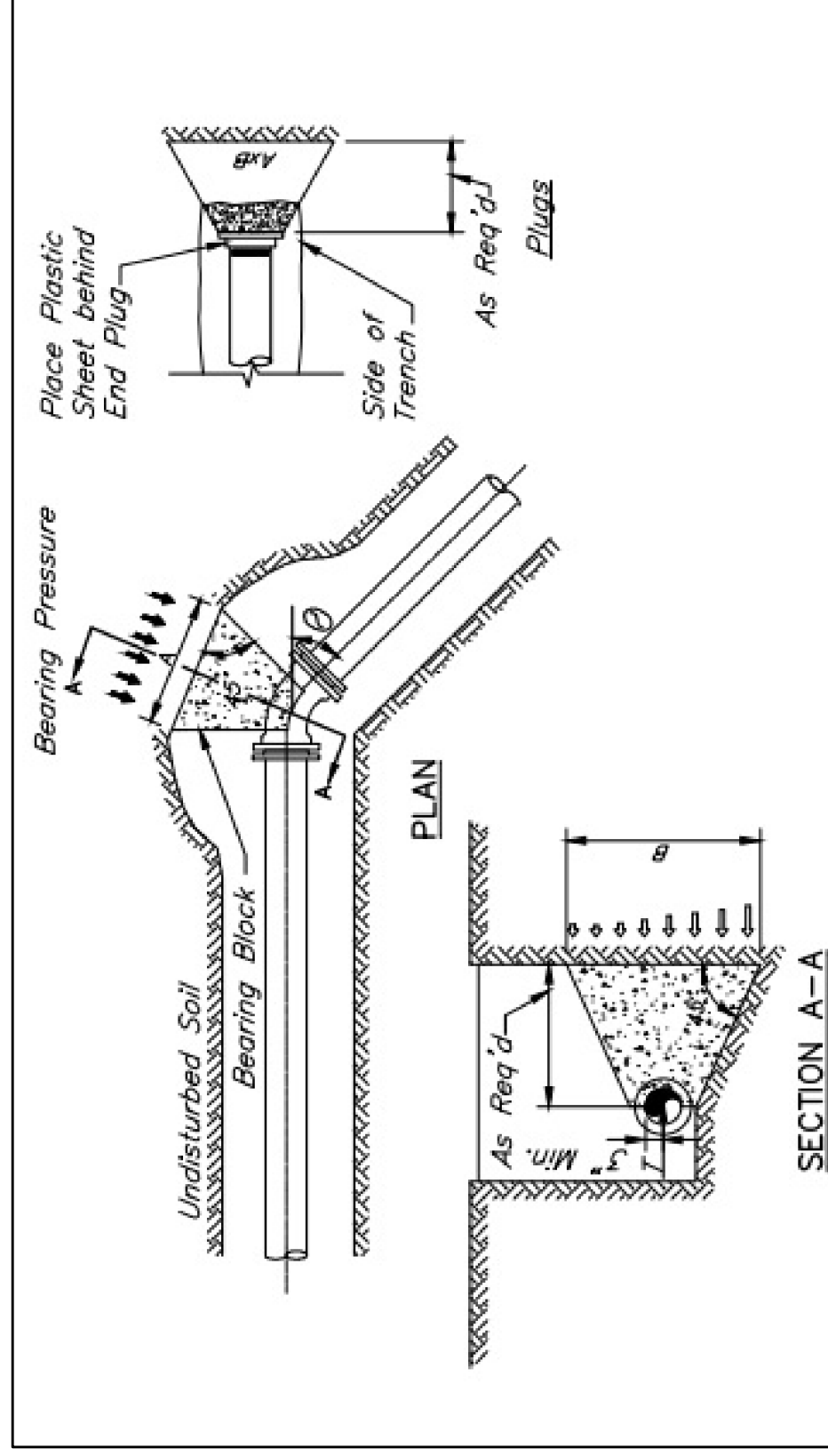
Sincerely,

Rachel Mills,

A handwritten signature in black ink that reads "Rachel Mills".

Rachel Mills, P.E.
Director
Division of Construction Procurement

RM:mr
Enclosures

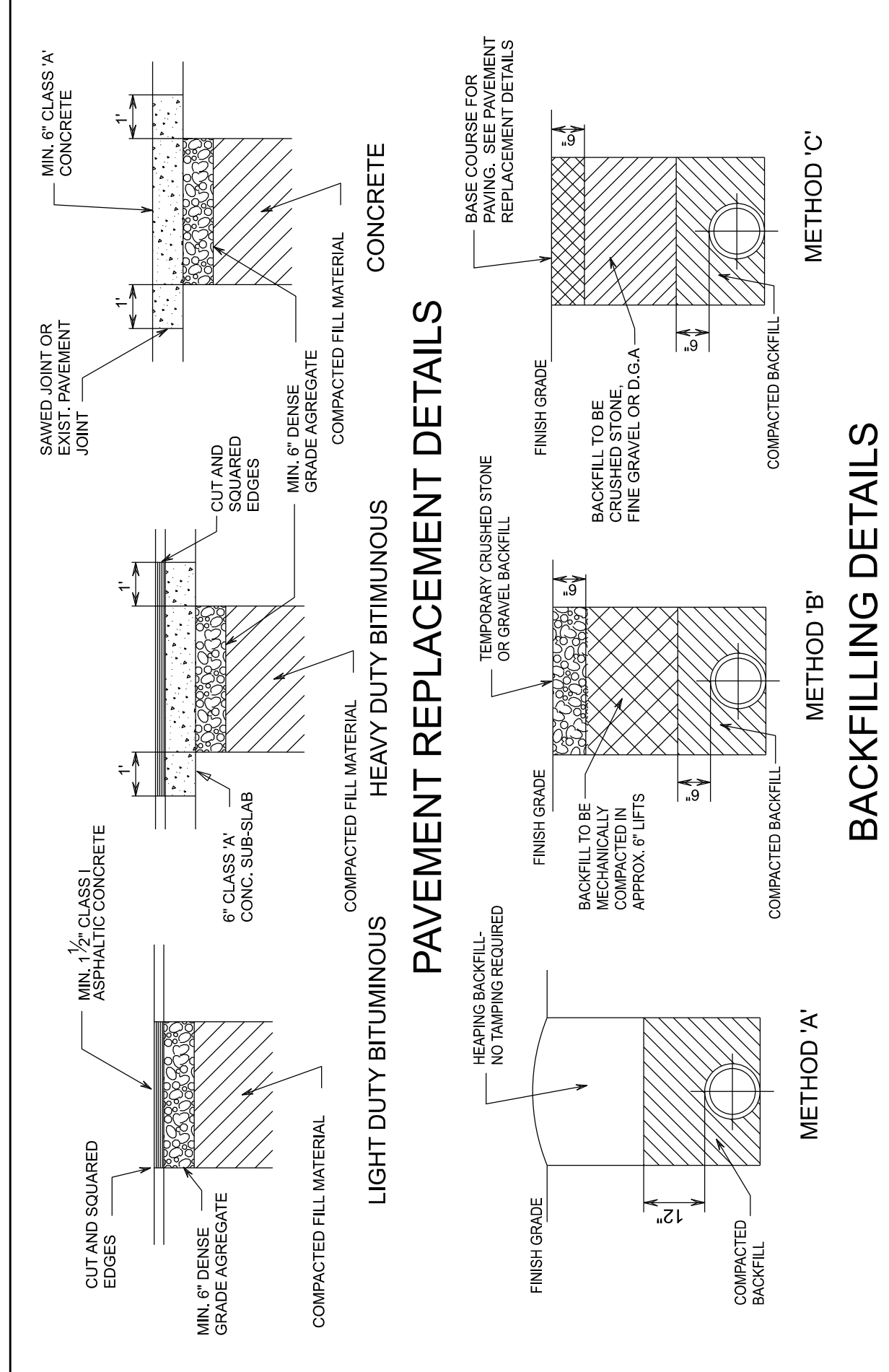


- NOTES:**
1. Thrust capacity table is based on pipe/line pressures of 200 psi and earthbearing capacity of 1500 pcf during construction. Please refer to the notes on the drawing for more details. Thrust block size revised at the discretion of the Engineer.
 2. On large diameter pipes where space limitations or construction difficulties render the concrete thrust block impractical, a steel restraint system may be used. The restraint joint system must be approved by the Engineer.
 3. Concrete shall be 3000 psi minimum conforming to KTC Specifications 601.
 4. Accessibility to fittings and bolts must be maintained.
 5. Wrap fittings in plastic prior to placing concrete.

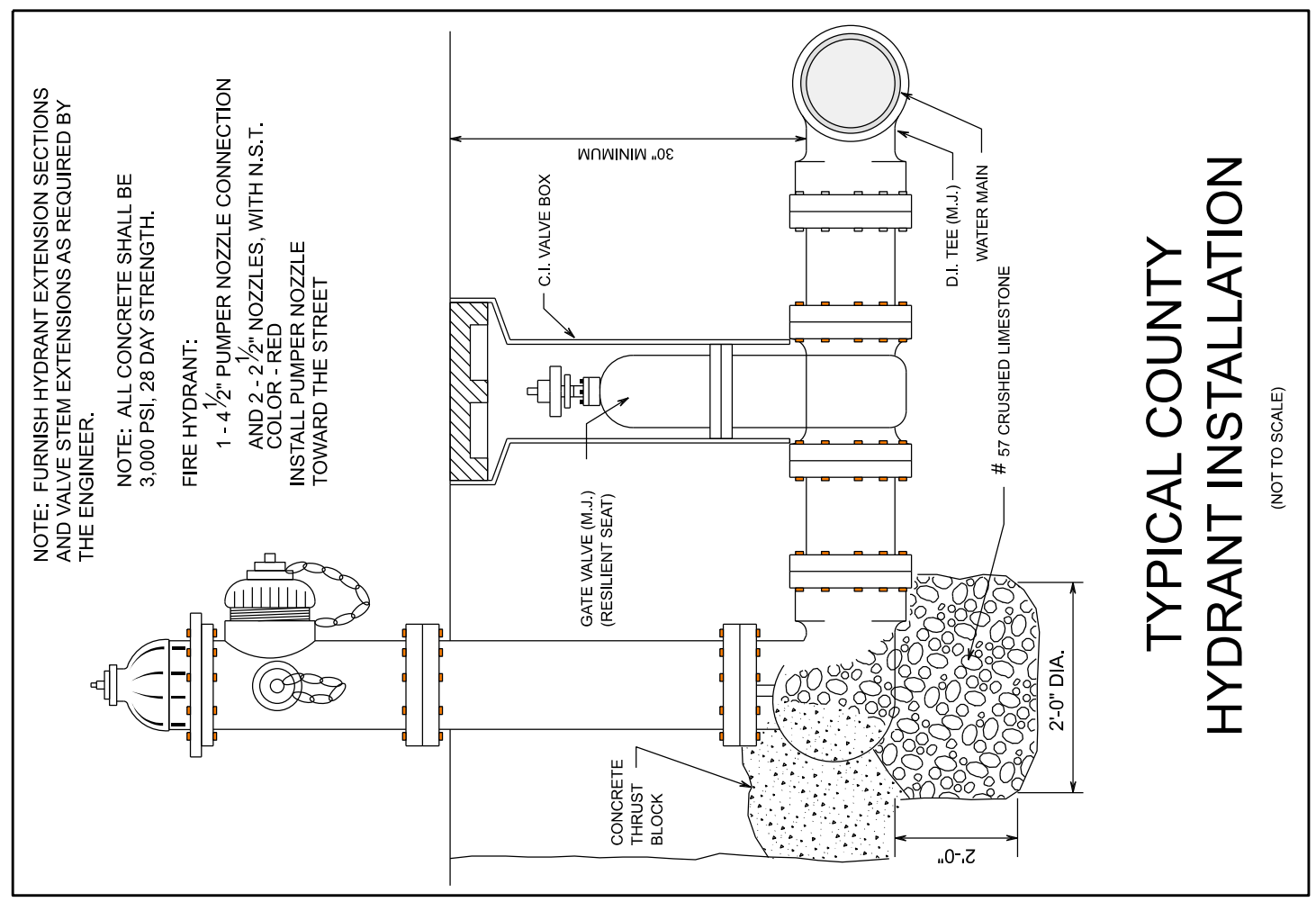
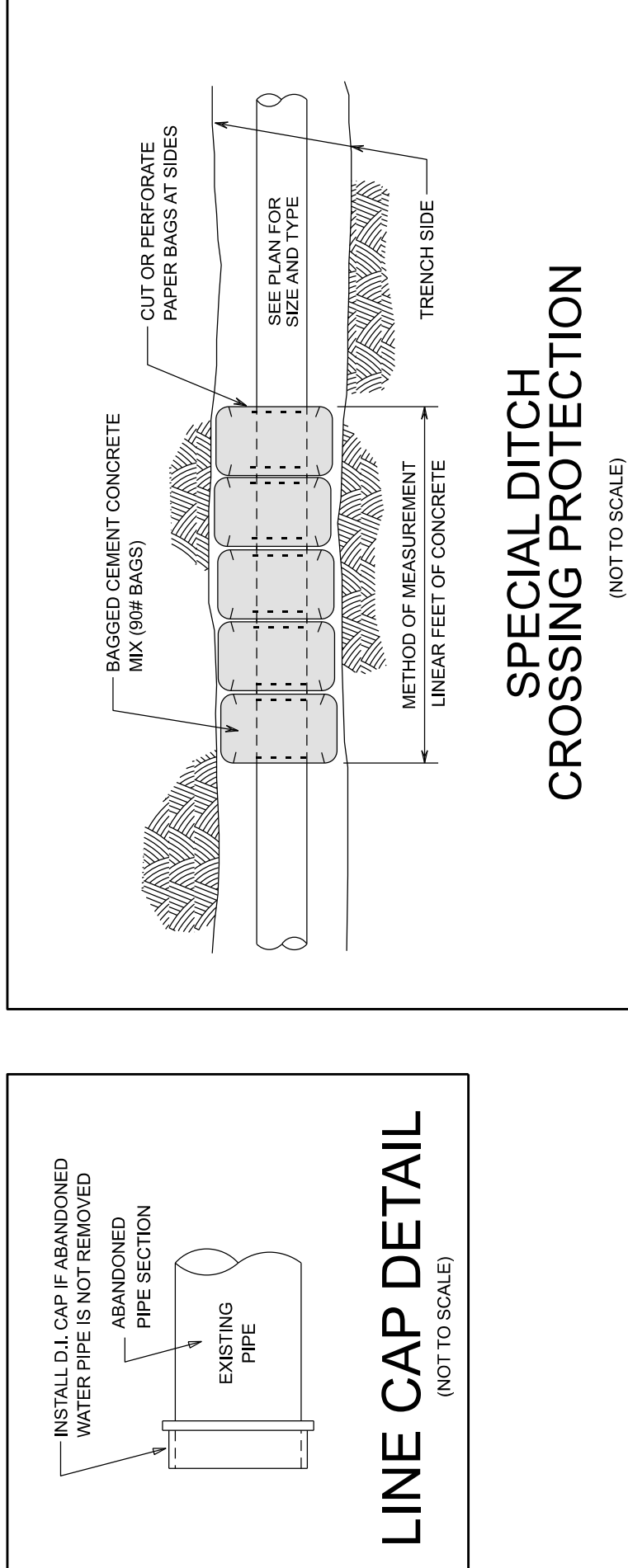
HORIZONTAL THRUST BLOCK SCHEDULE

PIPE SIZE (INCHES)	90° BEND		45° BEND		22.1/2° BEND		11.1/4° BEND		TEE, DEAD END	
	A	B	A	B	A	B	A	B	A	B
3 & 4	3'-3"	1'-8"	2'-4"	1'-2"	1'-8"	1'-0"	1'-0"	1'-0"	2'-8"	1'-4"
6	4'-8"	2'-4"	3'-5"	1'-8"	2'-6"	1'-3"	1'-6"	1'-0"	3'-10"	2'-0"
8	6'-0"	3'-0"	4'-5"	2'-3"	3'-2"	1'-7"	2'-3"	1'-2"	5'-0"	2'-6"
10	7'-6"	3'-9"	5'-5"	2'-9"	3'-10"	2'-0"	2'-9"	1'-5"	6'-3"	3'-2"
12	8'-10"	4'-5"	6'-6"	3'-3"	4'-8"	2'-4"	3'-4"	1'-8"	7'-5"	3'-9"
14	10'-3"	5'-2"	7'-6"	3'-9"	5'-4"	2'-8"	3'-10"	2'-0"	8'-8"	4'-4"
16	11'-8"	5'-10"	8'-7"	4'-4"	6'-1"	3'-0"	4'-4"	2'-2"	9'-9"	4'-11"
18	13'-0"	6'-8"	9'-7"	4'-9"	6'-10"	3'-5"	4'-10"	2'-5"	11'-0"	5'-6"
20	14'-5"	7'-3"	10'-7"	5'-4"	7'-7"	3'-9"	5'-4"	2'-8"	12'-2"	6'-1"
24	17'-3"	8'-8"	12'-8"	6'-4"	9'-0"	4'-6"	6'-5"	3'-3"	14'-6"	7'-3"

HORIZONTAL THRUST BLOCK



BACKFILLING DETAILS



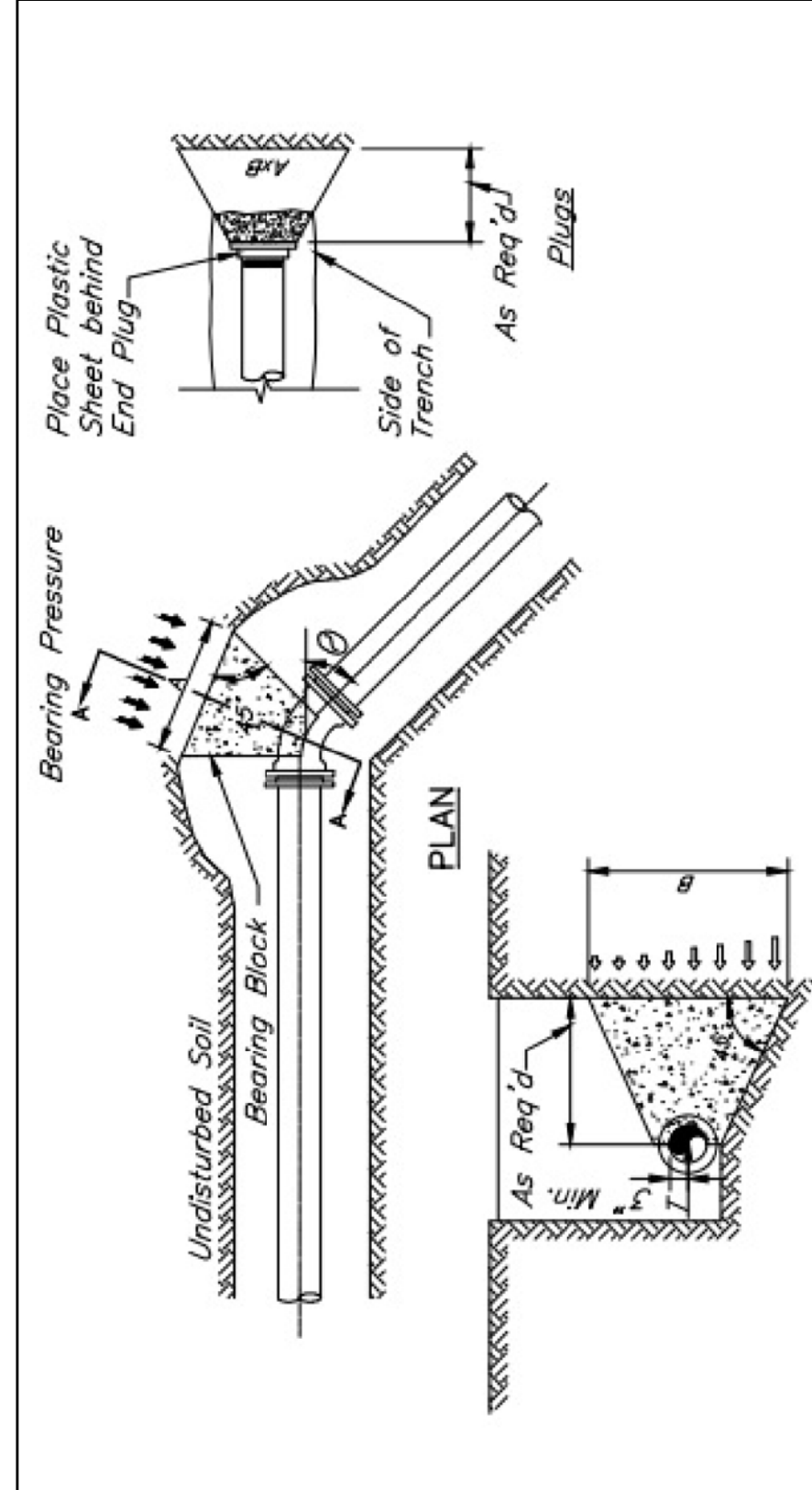
TYPICAL COUNTY HYDRANT INSTALLATION

OMPC Public Improvements Specifications
 All conditions and requirements of construction and implementation contained in the "Public Improvement Specifications" as issued by the Owensboro Metropolitan Planning Commission (OMPC) must be complied with on this project and are hereby incorporated by reference. Copies may be obtained from the OMPC office located on the 2nd Floor of the Chase Building at 200 E. Third Street, Owensboro, Kentucky or by downloading from the OMPC web page (www.iompc.org).

- NOTES:**
- 1.) ALL LINE VALVES, INSERTION VALVES, HYDRANT VALVES AND TAPPING VALVES SHALL INCLUDE VALVE STEM AND VALVE BOX EXTENSIONS AS IS APPLICABLE. NO ADDITIONAL COMPENSATION WILL BE PAID FOR SAID EXTENSION HARDWARE OR FOR INSTALLATION. FURNISH HYDRANT EXTENSIONS AS NECESSARY. NO ADDITIONAL COMPENSATION WILL BE PAID FOR SAID HYDRANT EXTENSION HARDWARE OR FOR INSTALLATION.
 - 2.) ALL CORP STOPS, 4" JUMPER LINES AND REQUIRED HARDWARE FOR LINE STERILIZATION AND FLUSHING SHALL BE INCIDENTAL TO THE NEW WATER MAIN BID ITEMS.
 - 3.) ALL TEMPORARY END CAPS, THRUST BLOCKS/KICKERS AND RELATED HARDWARE REQUIRED FOR PRESSURE TESTING OF THE NEW WATER PIPES SHALL BE INCIDENTAL TO THE NEW WATER MAIN BID ITEMS.
 - 4.) INSTALLATION OF RESILIENT FLANGES, RESTRAINER SYSTEMS AND THRUST BLOCKS AT FITTINGS, BENDS AND HYDRANTS SHALL BE INCIDENTAL TO THE RESPECTIVE BID ITEMS AND/OR NEW WATER MAIN BID ITEMS.

WATER LINE RELOCATION
 DAVIESS COUNTY
 WATER DISTRICT
 PREPARED BY:



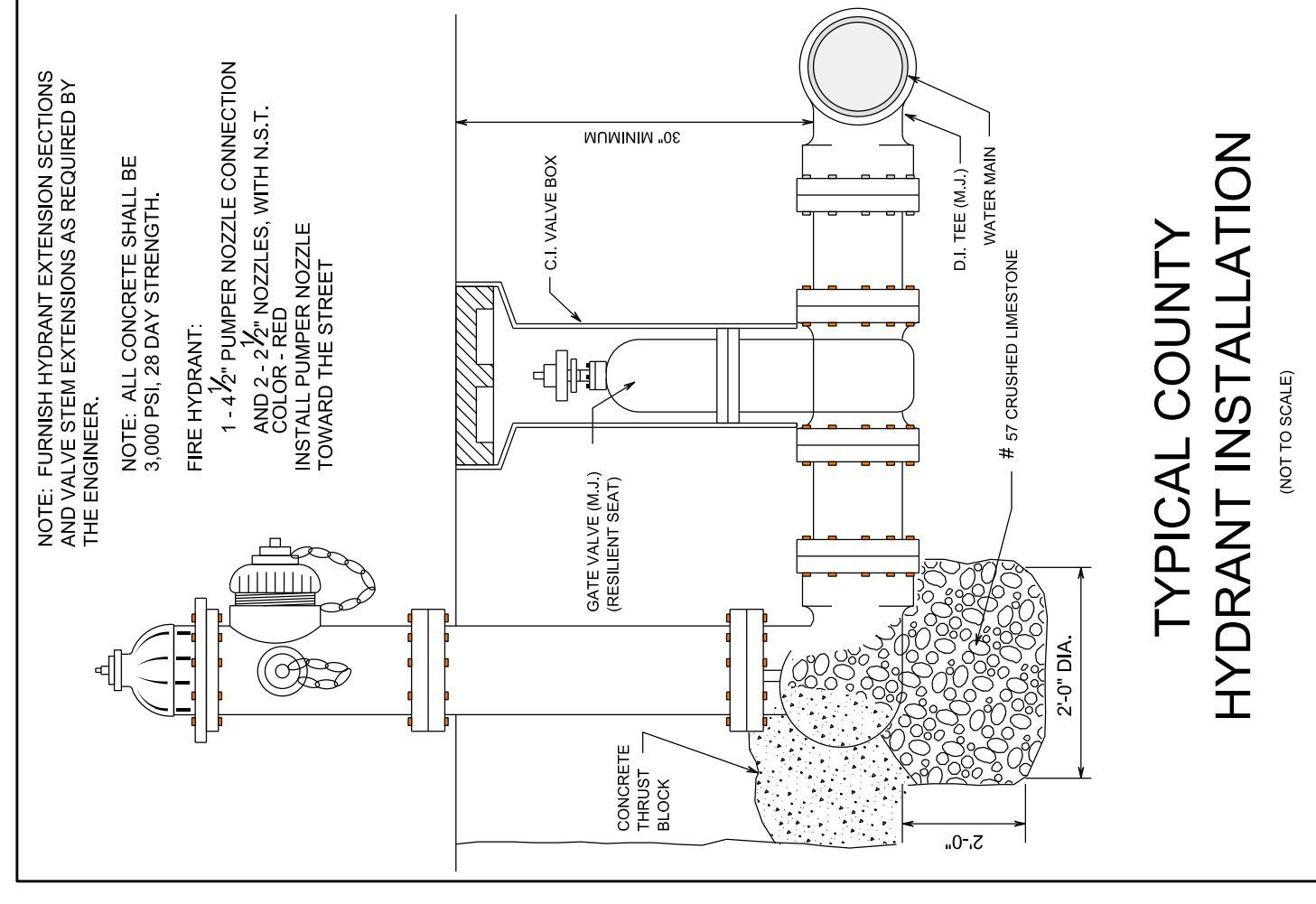
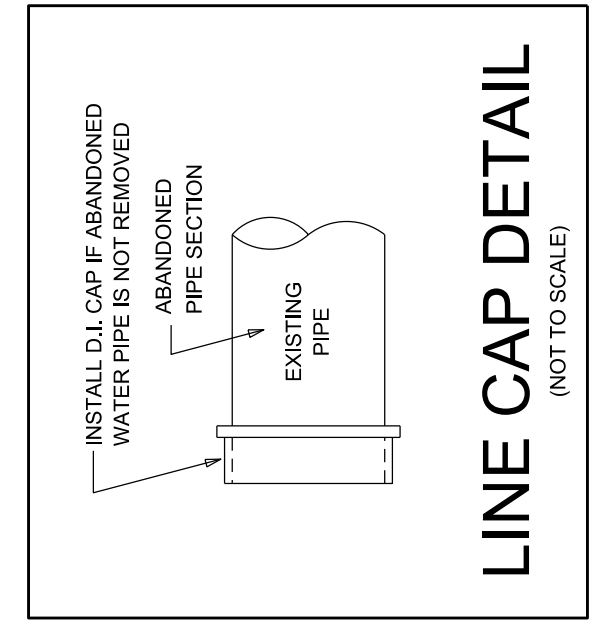
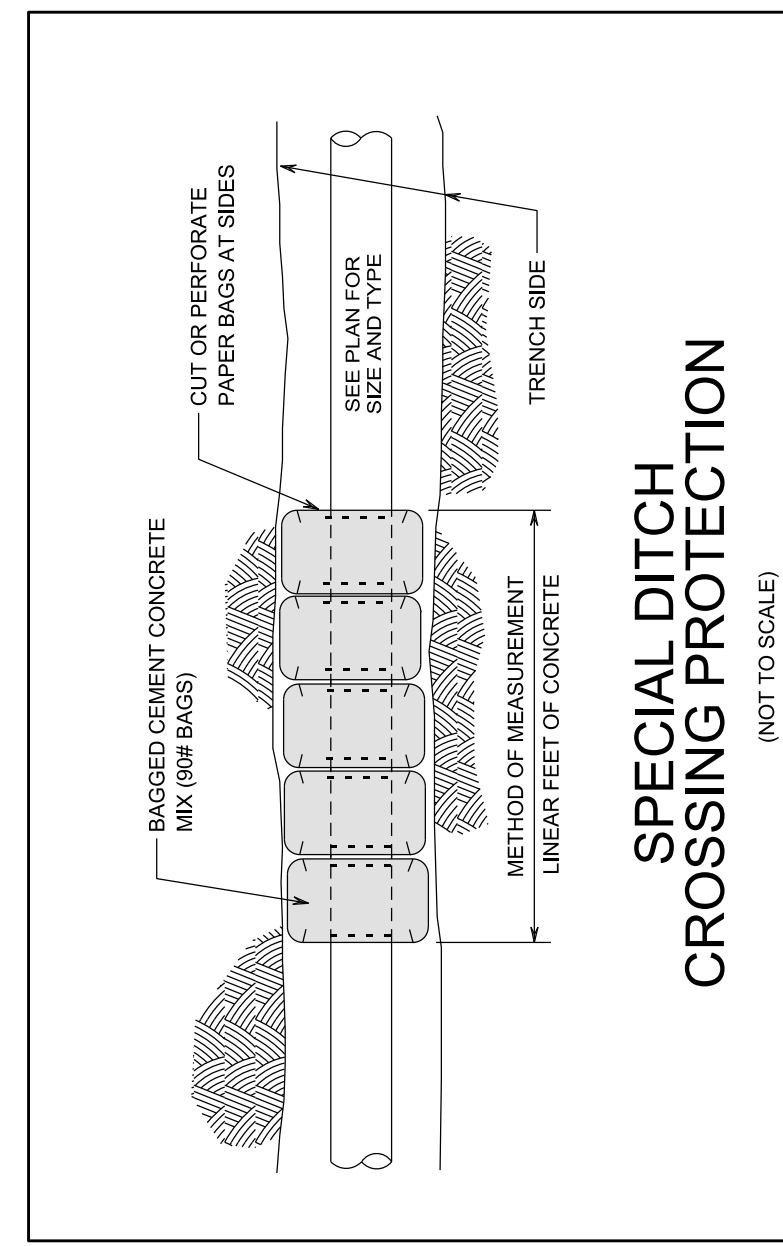
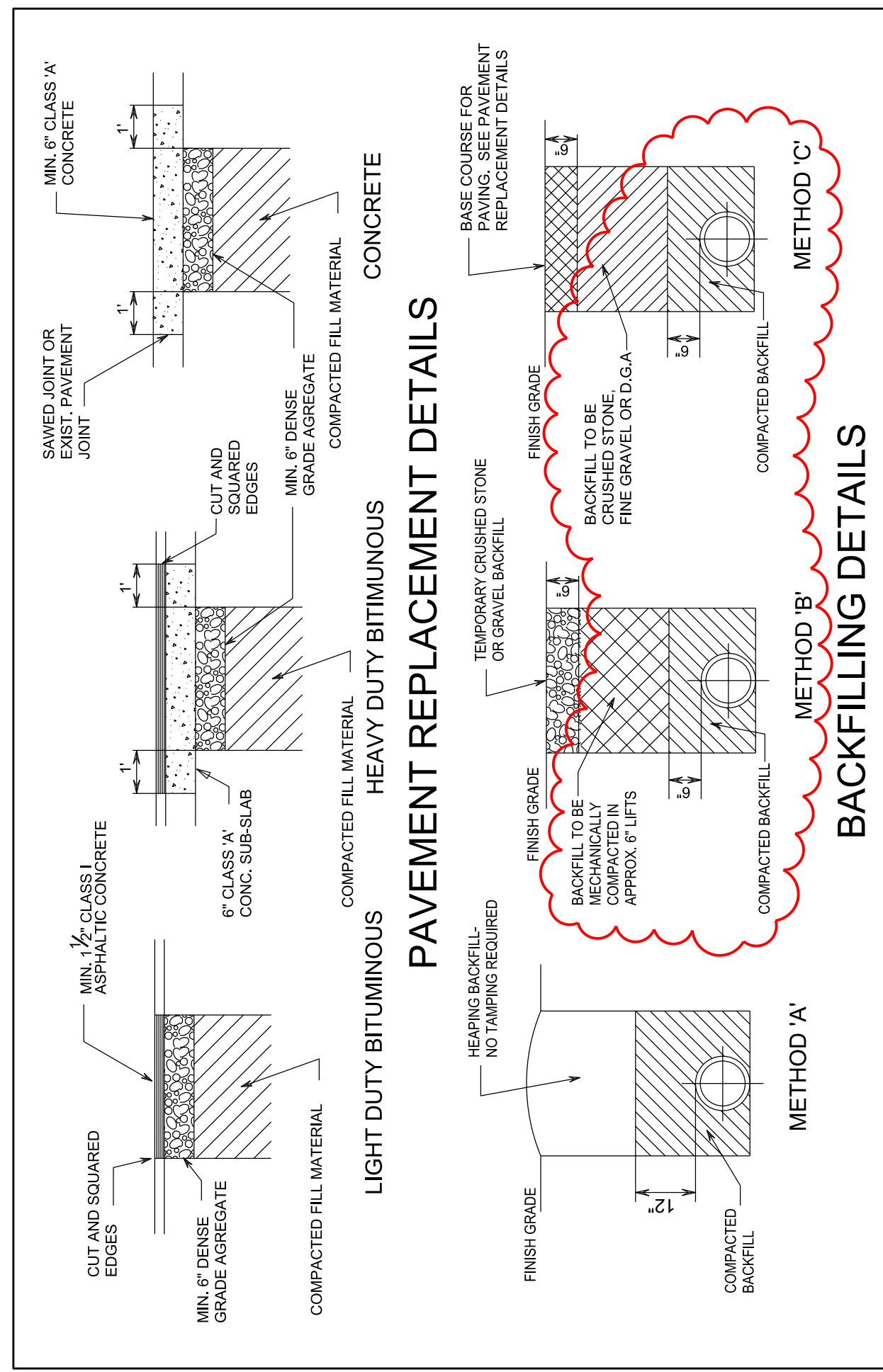


- NOTES:**
1. Thrust restraint table is based on pipeline pressure of 200 psi and earthbearing capacity of 1500 psf. During construction, the specific soil type may be evaluated and concrete thrust block size revised at the discretion of the Engineer.
 2. On large diameter pipes where space limitations or construction difficulties render concrete thrust blocks not feasible or impractical, a joint restraint system may be used. This restrained joint system must be approved by the Engineer.
 3. Concrete shall be 3000 psi minimum conforming to KTC Specifications 601.
 4. Accessibility to fittings and bolts must be maintained.
 5. Wrap fittings in plastic prior to placing concrete.

HORIZONTAL THRUST BLOCK SCHEDULE

PIPE SIZE (INCHES)	90° BEND		45° BEND		22.1/2° BEND		11.1/4° BEND		TEE, DEAD END	
	A	B	A	B	A	B	A	B	A	B
3 & 4	3'-3"	1'-8"	2'-4"	1'-2"	1'-8"	1'-0"	1'-0"	1'-0"	2'-8"	1'-4"
6	4'-8"	2'-4"	3'-5"	1'-8"	2'-6"	1'-3"	1'-6"	1'-0"	3'-10"	2'-0"
8	6'-0"	3'-0"	4'-5"	2'-3"	3'-2"	1'-7"	2'-3"	1'-2"	5'-0"	2'-6"
10	7'-6"	3'-9"	5'-5"	2'-9"	3'-10"	2'-0"	2'-9"	1'-8"	6'-3"	3'-2"
12	8'-10"	4'-5"	6'-8"	3'-3"	4'-8"	2'-4"	3'-4"	1'-8"	7'-5"	3'-9"
14	10'-3"	5'-2"	7'-6"	3'-9"	5'-4"	2'-8"	3'-10"	2'-0"	8'-8"	4'-4"
16	11'-8"	5'-10"	8'-7"	4'-4"	6'-1"	3'-0"	4'-4"	2'-2"	9'-9"	4'-11"
18	13'-0"	6'-8"	9'-7"	4'-9"	6'-10"	3'-5"	4'-10"	2'-5"	11'-0"	5'-8"
20	14'-5"	7'-3"	10'-7"	5'-4"	7'-7"	3'-9"	5'-4"	2'-8"	12'-2"	6'-1"
24	17'-3"	8'-8"	12'-8"	6'-4"	9'-0"	4'-6"	6'-5"	3'-3"	14'-6"	7'-3"

HORIZONTAL THRUST BLOCK



TYPICAL COUNTY HYDRANT INSTALLATION

NOTE: FURNISH HYDRANT EXTENSION SECTIONS AND VALVE STEM EXTENSIONS AS REQUIRED BY THE ENGINEER.
NOTE: ALL CONCRETE SHALL BE 3000 PSI, 28 DAY STRENGTH.
FIRE HYDRANT:
1 - 1/2" PLUMBER NOZZLE CONNECTION AND 2 - 2 1/2" NOZZLES, WITH N.S.T. INSULATED PLUMBER NOZZLE TOWARD THE STREET

OMPC Public Improvements Specifications
All conditions and requirements of construction and implementation contained in the "Public Improvement Specifications" as issued by the Owensboro Metropolitan Planning Commission (OMPC) must be complied with on this project and are hereby incorporated by reference. Copies may be obtained from the OMPC office located on the 2nd Floor of the Chase Building at 200 E. Third Street, Owensboro, Kentucky or by downloading from the OMPC web page (www.iompc.org).

WATER LINE RELOCATION
DAVIESS COUNTY
WATER DISTRICT
PREPARED BY:



- NOTES:**
- 1.) ALL LINE VALVES, INSERTION VALVES, HYDRANT VALVES AND TAPPING VALVES SHALL INCLUDE VALVE STEM AND VALVE BOX EXTENSIONS AS IS APPLICABLE. NO ADDITIONAL COMPENSATION WILL BE PAID FOR SAID EXTENSION HARDWARE OR FOR INSTALLATION. FURNISH HYDRANT EXTENSIONS AS NECESSARY. NO ADDITIONAL COMPENSATION WILL BE PAID FOR SAID HYDRANT EXTENSION HARDWARE OR FOR INSTALLATION.
 - 2.) ALL CORP STOPS, 1" JUMPER LINES AND REQUIRED HARDWARE FOR LINE STERILIZATION AND FLUSHING SHALL BE INCIDENTAL TO THE NEW WATER MAIN BID ITEMS.
 - 3.) ALL TEMPORARY END CAPS, THRUST BLOCKS/KICKERS AND RELATED HARDWARE REQUIRED FOR PRESSURE TESTING OF THE NEW WATER PIPES SHALL BE INCIDENTAL TO THE NEW WATER MAIN BID ITEMS.
 - 4.) INSTALLATION OF RESILIENT FLANGES, RESTRAINER SYSTEMS AND THRUST BLOCKS AT FITTINGS, BENDS AND HYDRANTS SHALL BE INCIDENTAL TO THE RESPECTIVE BID ITEMS AND/OR NEW WATER MAIN BID ITEMS.